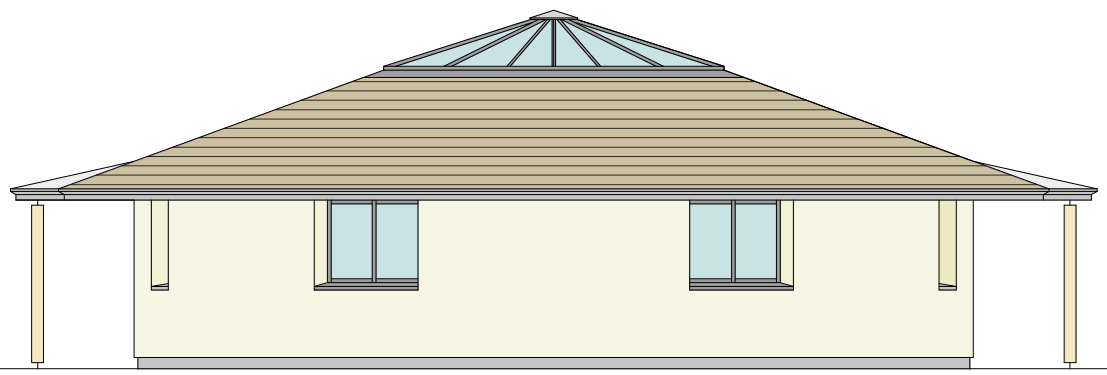
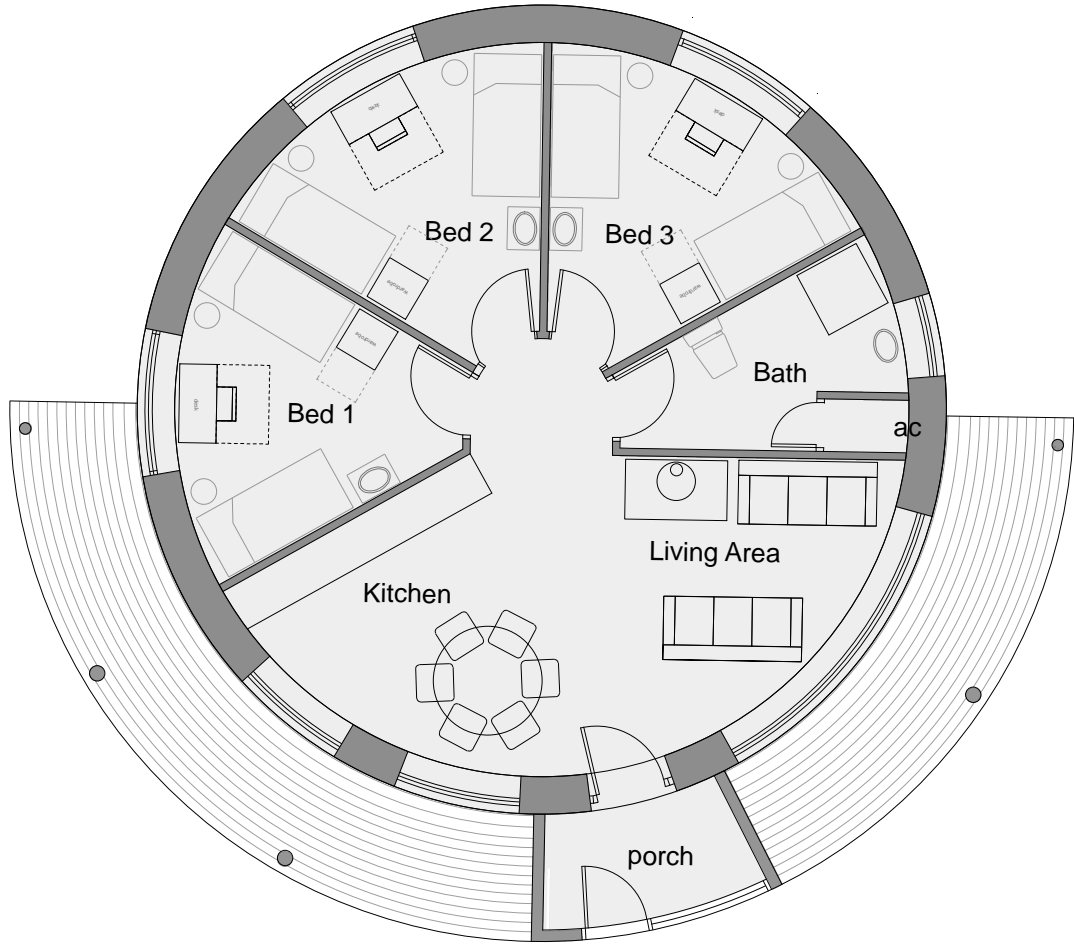


Front Elevation



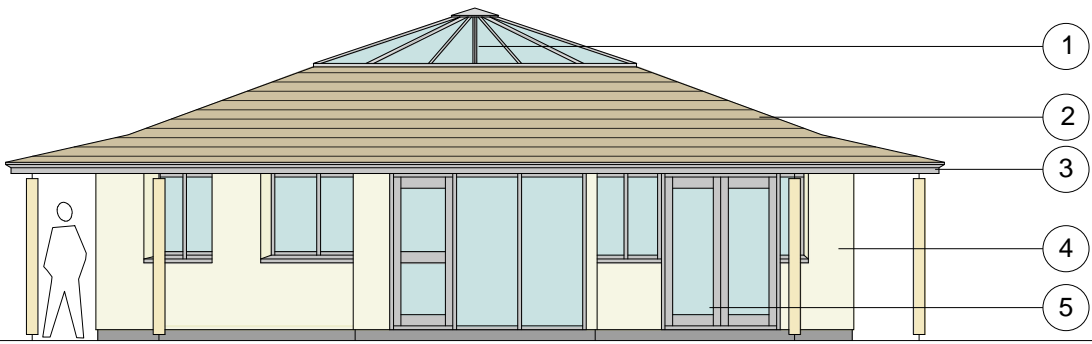
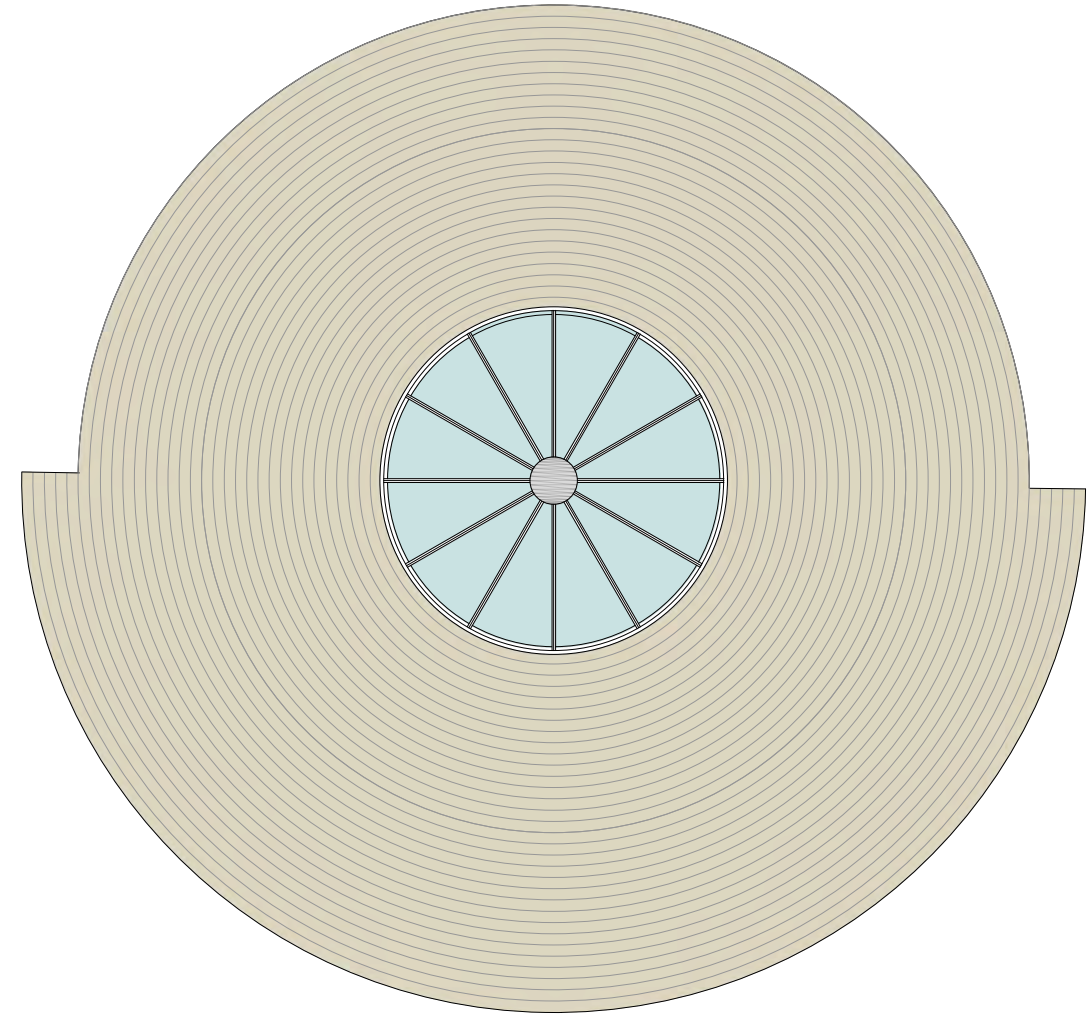
Ground Floor Plan



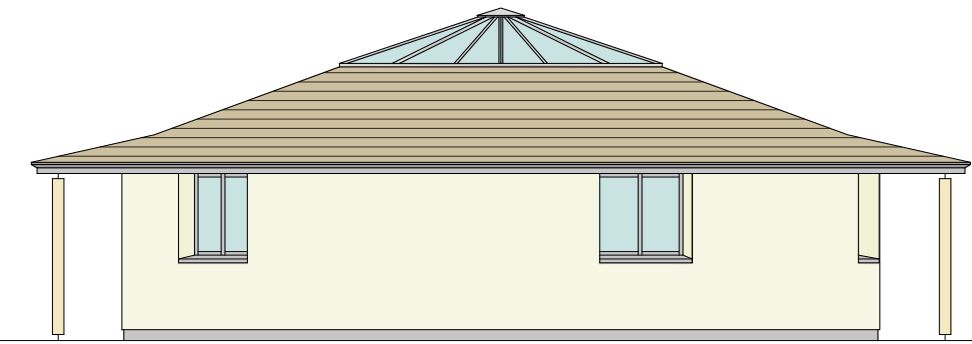
Ground Floor Plan

- HOUSE TYPE 4: Holiday / Visitor Accommodation**
THREE BEDROOM ROUNDHOUSE
Gross internal area: 75.4 sq.m (811 sq.ft)
- 1 Roof light centrally mounted with opening lights
 - 2 Cedar Shingle roof covering
 - 3 Dark grey soffit and eaves fascia
 - 4 Straw Bale wall construction with external render finishes
 - 5 High performance double glazed windows & doors

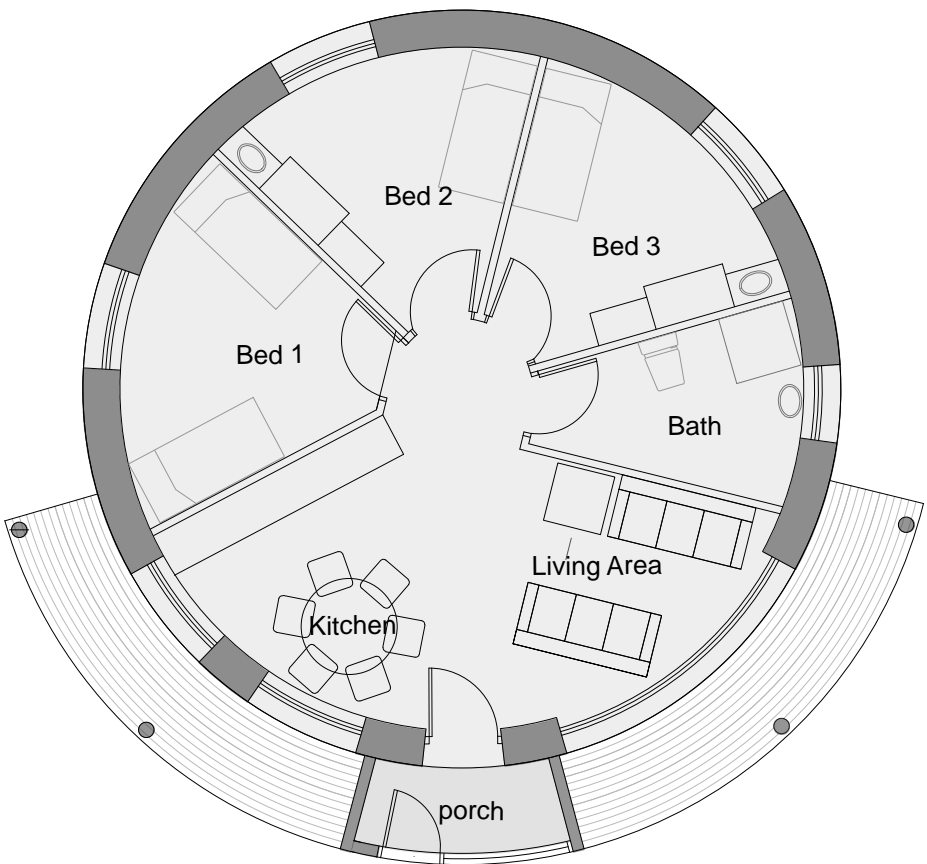
0 1 2 3 4 5



Front Elevation

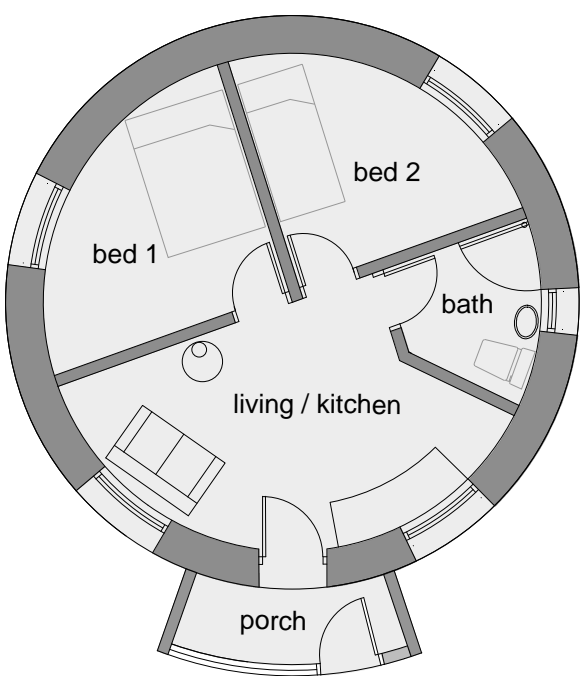
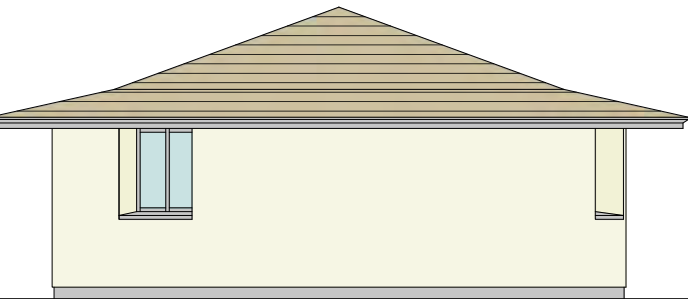
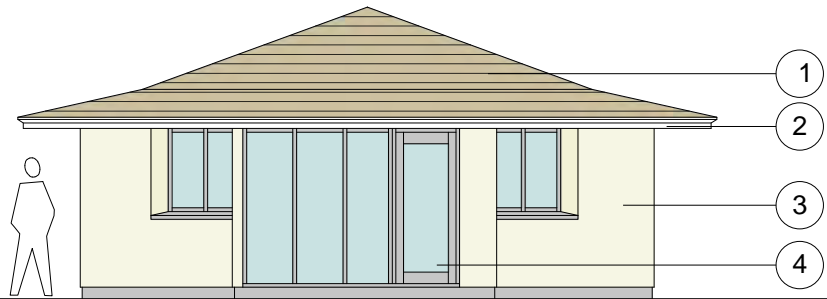
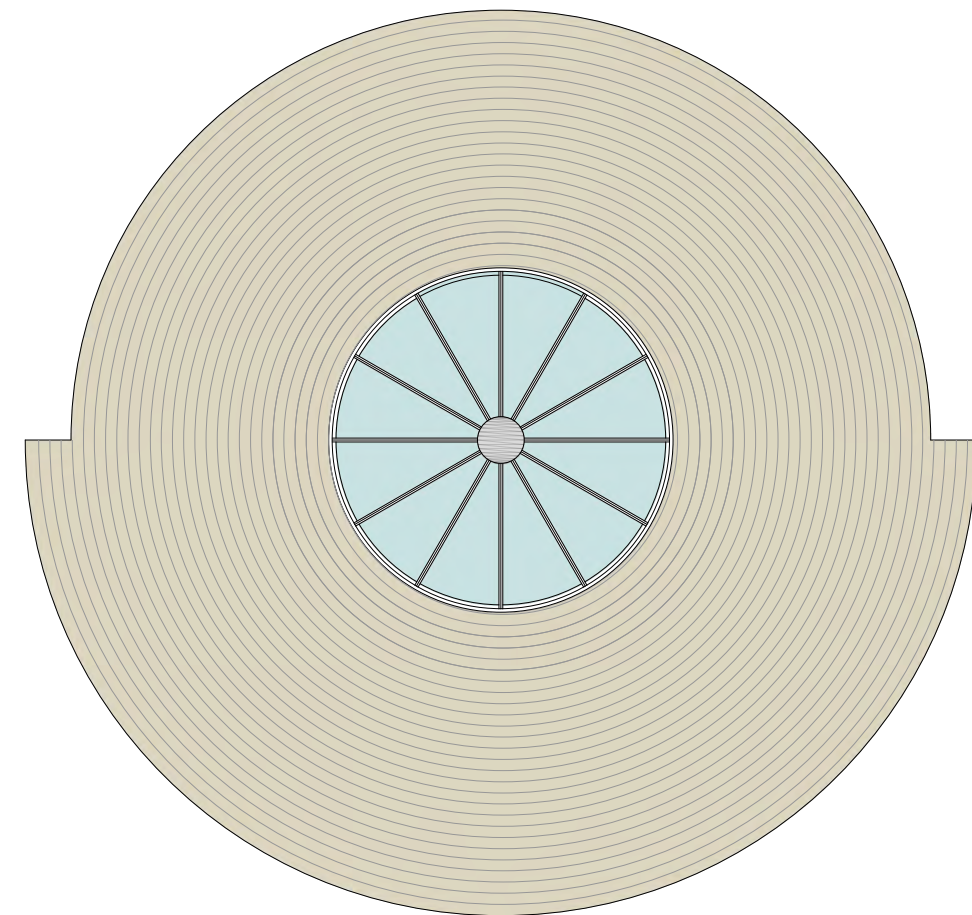


Rear Elevation



- HOUSE TYPE 5: Holiday / Visitor Accommodation**
THREE BEDROOM ROUNDHOUSE
Holiday / Visitor Accommodation
Gross internal area: 66 sq.m (710 sq.ft)
- 1 Roof light centrally mounted with opening lights
 - 2 Cedar Shingle roof covering
 - 3 Dark grey soffit and eaves fascia
 - 4 Straw Bale wall construction with external render finishes
 - 5 High performance double glazed windows & doors

0 1 2 3 4 5



- HOUSE TYPE 6: Holiday / Visitor Accommodation**
TWO BEDROOM ROUNDHOUSE
Gross internal area: 34.1 sq.m (367 sq.ft)
- 1 Cedar Shingle roof covering
 - 2 Dark grey soffit and eaves fascia
 - 3 Straw Bale wall construction with external render finishes
 - 4 High performance double glazed windows & doors

0 1 2 3 4 5

